

The image features a vibrant yellow background with abstract, overlapping shapes in shades of blue and green. Several white circles are scattered throughout, some appearing as if they are part of the shapes or as standalone elements. The overall aesthetic is modern and geometric.

Combined Existing Utility Records



BUSCONNECTS DUBLIN CORE BUS CORRIDORS INFRASTRUCTURE WORKS

KIMMAGE TO CITY CENTRE CORE BUS CORRIDOR SCHEME

COMBINED EXISTING UTILITIES RECORDS	
DRAWING SERIES NUMBER(S)	DRAWING SERIES DESCRIPTION
BCIDD-ROT-UTL_IX-0011_XX_00-DR-CU-0001	RINGSEND TO CITY CENTRE CORE BUS CORRIDOR SCHEME. COMBINED EXISTING UTILITIES RECORDS. COVER SHEET
BCIDD-ROT-UTL_KP-0011_XX_00-DR-CU-0001	RINGSEND TO CITY CENTRE CORE BUS CORRIDOR SCHEME. COMBINED EXISTING UTILITIES RECORDS. KEY PLAN
BCIDD-ROT-UTL_UC-0011_XX_00-DR-CU-0001 to 0014	RINGSEND TO CITY CENTRE CORE BUS CORRIDOR SCHEME. COMBINED EXISTING UTILITIES RECORDS. DRAWINGS.

\\wddubp1u20191917117117-02_WIP08 MODELS01 CAD01 DWG03 STG 3 - STATUTORY PROCESS (M)01 PLANNING11 KIMMAGECOVER SHEETSBCIDD-ROT-UTL_IX-0011_XX_00-DR-CU-0001.dwg

Disclaimer

a. © National Transport Authority (NTA) 2022. This drawing is confidential and the copyright in it is owned by NTA. This drawing must not be either loaned, copied or otherwise reproduced in whole or in part or used for any purpose without the prior permission of NTA.

b. This drawing is to be used for the design element identified in the titleblock. Other information shown is to be considered indicative only. The drawing is to be read in conjunction with all other relevant design drawings.

c. O.S. data used for plans are printed under © Ordnance Survey Ireland Government of Ireland. All rights reserved. Licence Number 2022/OSI_NMA_180 National Transport Authority. All elevations are in metres and relate to OSI Geoid Model (OSGM15) Mean Head. All Co-ordinates are in Irish Transverse Mercator Grid (ITM) as defined by OSI active local GPS station.

d. Information concerning the position of apparatus shown on this drawing is based on drawings supplied by the utility owners and/or the utility works contractor, whilst every care has been taken in the preparation of this drawing, positions should be taken as approximate and are intended for general guidance only and no representation is made by the NTA as to the accuracy, completeness, sufficiency or otherwise of this drawing and the position of the apparatus. The information contained herein does not purport to be comprehensive or final as the apparatus is subject to being altered and/or superceded. Recipients should not rely on this information. Any liabilities are hereby expressly disclaimed.

e. The information contained herein has been provided by the NTA but does not purport to be comprehensive or final. Recipients should not rely on the information. Neither the NTA nor any of its directors, officers, employees, agents, stakeholders or advisers make any representation or warranty as to, or accept any liability or responsibility in relation to, the adequacy, accuracy, reasonableness or completeness of the information provided as part of this document or any matter on which the information is based (including but not limited to loss or damage arising as a result of reliance by recipients on the information or any part of it). Any liabilities are hereby expressly disclaimed.

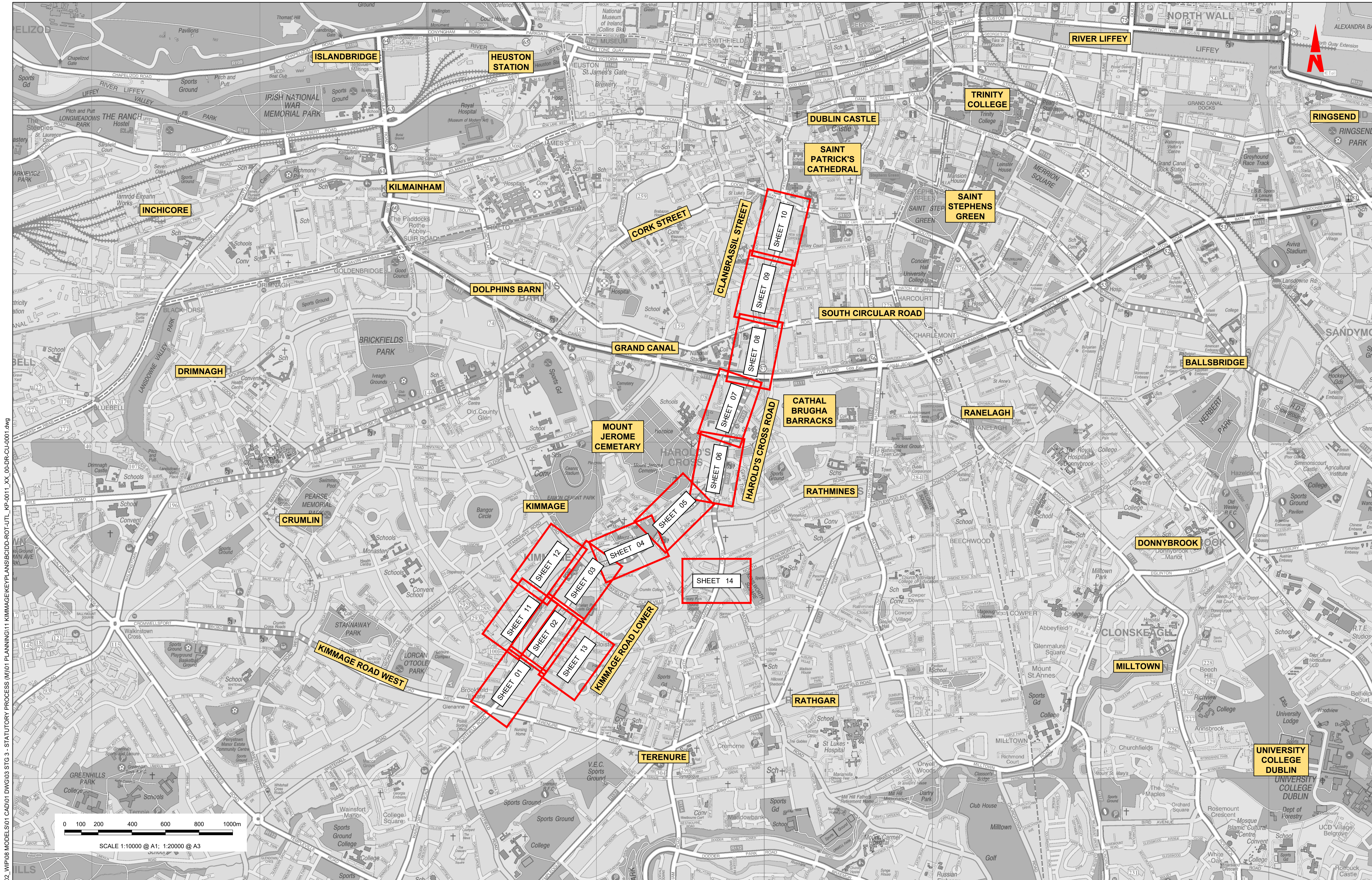


Rev	Date	Drn	Chk'd	App'd	Description
M01	FEB 2023	CG	SMG	SMG	ISSUE FOR PHASE 4: PLANNING

Client NTA Údarás Náisiúnta Iompair National Transport Authority		Engineering Designer ROD TYP SA RUGHAN & O'DONOVAN		
Date FEB 2023	Scale NTS @ A1 NTS @ A3	Drawn CG	Checked SMG	Approved SMG
Programme Code BCIDD	Originator Code ROT	QMS Code		

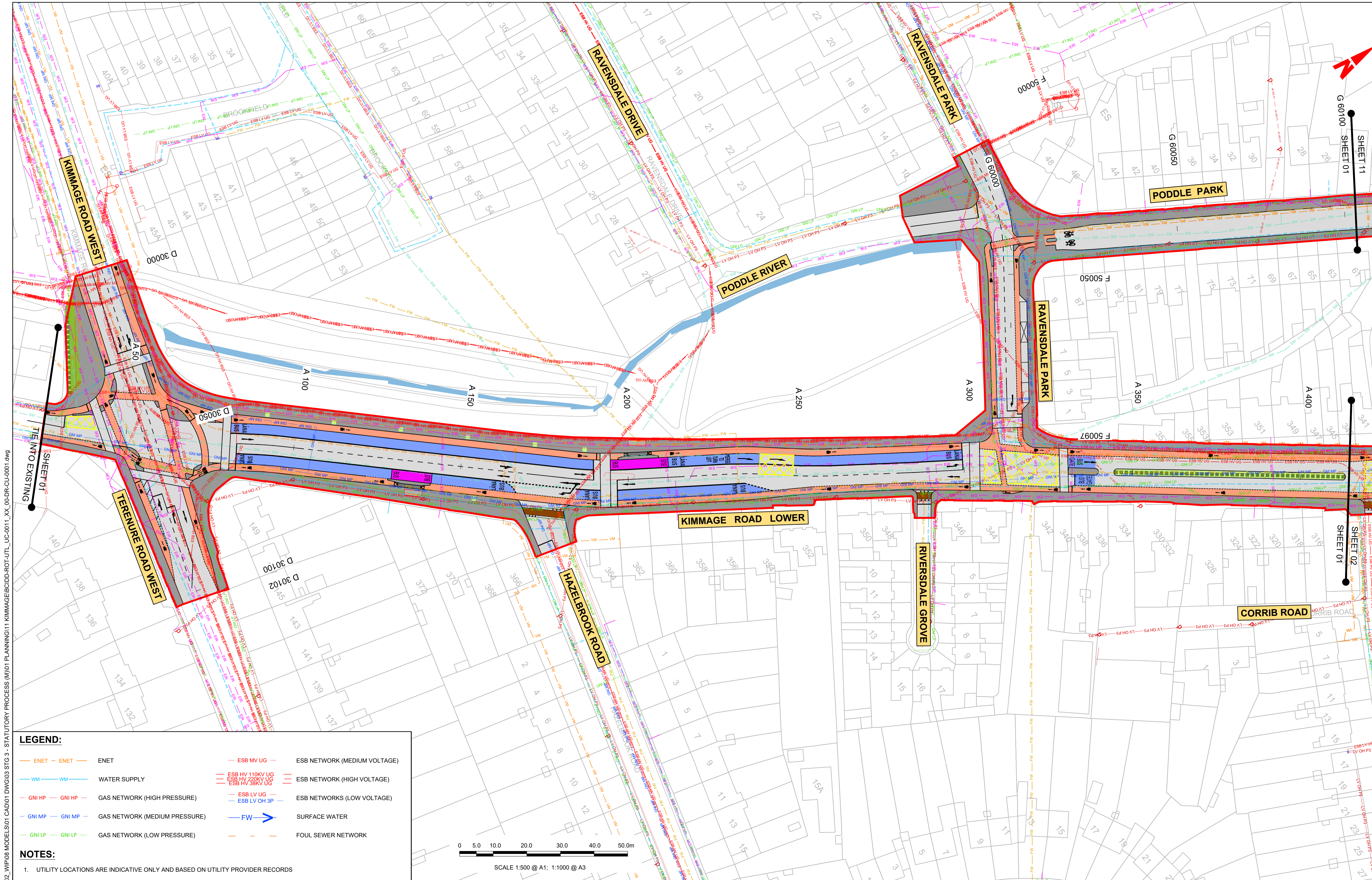
Programme Title BUSCONNECTS DUBLIN CORE BUS CORRIDORS INFRASTRUCTURE WORKS			
Drawing Title KIMMAGE TO CITY CENTRE CORE BUS CORRIDOR SCHEME COMBINED EXISTING UTILITIES RECORDS COVER SHEET			
Drawing File Name BCIDD-ROT-UTL_IX-0011_XX_00-DR-CU-0001	Sheet Number 01 of 0	Status A	Rev M01

DO NOT SCALE USE FIGURED DIMENSIONS ONLY



W:\000000\191119117-02_WIP08 MODELS\01_CAD\01 PLANNING\11_KIMMAGE\KEYPLANS\BCIDD-ROT-UTL_KP-0011_XX_00-DR-CU-0001.dwg
 0 100 200 400 600 800 1000m
 SCALE 1:10000 @ A1; 1:20000 @ A3

<p>Disclaimer</p> <p>a. © National Transport Authority (NTA) 2022. This drawing is confidential and the copyright in it is owned by NTA. This drawing must not be either loaned, copied or otherwise reproduced in whole or in part or used for any purpose without the prior permission of NTA.</p> <p>b. This drawing is to be used for the design element identified in the titleblock. Other information shown is to be considered indicative only. The drawing is to be read in conjunction with all other relevant design drawings.</p> <p>c. O.S. data used for plans are printed under © Ordnance Survey Ireland Government of Ireland. All rights reserved. Licence Number 2022/OSI_NMA_180 National Transport Authority. All elevations are in metres and relate to OSI Geoid Model (OSGM15) Mean Head. All Co-ordinates are in Irish Transverse Mercator Grid (ITM) as defined by OSI active local GPS station.</p> <p>d. Information concerning the position of apparatus shown on this drawing is based on drawings supplied by the utility owners and/or the utility works contractor, whilst every care has been taken in the preparation of this drawing, positions should be as to, or accept any liability or responsibility in relation to, the adequacy, accuracy, reasonableness or completeness of the information provided as part of this document or any matter on which the information is based (including but not limited to loss or damage arising as a result of reliance by recipients on the information or any part of it). Any liabilities are hereby expressly disclaimed.</p>		<p>Rev M01 Date FEB 2023 Drm CG Chk'd SMG App'd SMG</p>		<p>Description ISSUE FOR PHASE 4 : PLANNING</p>		<p>Client Udárás Náisiúnta Iompair National Transport Authority</p>		<p>Engineering Designer NTA Udárás Náisiúnta Iompair National Transport Authority</p>			<p>Programme Title BUSCONNECTS DUBLIN CORE BUS CORRIDORS INFRASTRUCTURE WORKS</p>			
<p>Date FEB 2023 Scale 1:10,000 @ A1 1:20,000 @ A3</p>		<p>Drawn CG Checked SMG Approved SMG</p>		<p>Programme Code BCIDD</p>		<p>Originator Code ROT</p>		<p>QMS Code</p>		<p>Drawing Title KIMMAGE TO CITY CENTRE CORE BUS CORRIDOR SCHEME COMBINED EXISTING UTILITIES RECORDS KEY PLAN</p>				
<p>Drawing File Name BCIDD-ROT-UTL_KP-0011_XX_00-DR-CU-0001</p>		<p>Sheet Number 01 of 01</p>		<p>Status A</p>		<p>Rev M01</p>		<p>DO NOT SCALE USE FIGURED DIMENSIONS ONLY</p>						



LEGEND:

ENET	ENET	ESB MV UG	ESB NETWORK (MEDIUM VOLTAGE)
WM	WATER SUPPLY	ESB HV 110KV UG	ESB NETWORK (HIGH VOLTAGE)
GNI HP	GAS NETWORK (HIGH PRESSURE)	ESB HV 220KV UG	
GNI MP	GAS NETWORK (MEDIUM PRESSURE)	ESB HV 38KV UG	
GNI LP	GAS NETWORK (LOW PRESSURE)	ESB LV UG	ESB NETWORKS (LOW VOLTAGE)
		ESB LV OH 3P	
		FW	SURFACE WATER
			FOUL SEWER NETWORK

NOTES:

- UTILITY LOCATIONS ARE INDICATIVE ONLY AND BASED ON UTILITY PROVIDER RECORDS

W:\000000\1917117-02_WIP\08 MODELS\01 CAD\01 PLANNING\11 KIMMAGE\BCDD-ROT-UTL_UC-0011_XX_00-DR-CU-0001.dwg

Disclaimer:

a. © National Transport Authority (NTA) 2022. This drawing is confidential and the copyright in it is owned by NTA. This drawing must not be either loaned, copied or otherwise reproduced in whole or in part or used for any purpose without the prior permission of NTA.

b. This drawing is to be used for the design element identified in the titleblock. Other information shown is to be considered indicative only. The drawing is to be read in conjunction with all other relevant design drawings.

c. O.S. data used for plans are printed under © Ordnance Survey Ireland Government of Ireland. All rights reserved. Licence Number 2022/OSI_NMA_180 National Transport Authority. All elevations are in metres and relate to OSI Geoid Model (OSGM15) Mean Head. All Co-ordinates are in Irish Transverse Mercator Grid (ITM) as defined by OSI active local GPS station.

d. Information concerning the position of apparatus shown on this drawing is based on drawings supplied by the utility owners and/or the utility works contractor, whilst every care has been taken in the preparation of this drawing, positions should be taken as approximate and are intended for general guidance only and no representation is made by the NTA as to the accuracy, completeness, sufficiency or otherwise of this drawing and the position of the apparatus. The information contained herein does not purport to be comprehensive or final as the apparatus is subject to being altered and/or superceded. Recipients should not rely on this information. Any liabilities are hereby expressly disclaimed.

e. The information contained herein has been provided by the NTA but does not purport to be comprehensive or final. Recipients should not rely on the information. Neither the NTA nor any of its directors, officers, employees, agents, stakeholders or advisers make any representation or warranty as to, or accept any liability or responsibility in relation to, the adequacy, accuracy, reasonableness or completeness of the information provided as part of this document or any matter on which the information is based (including but not limited to loss or damage arising as a result of reliance by recipients on the information or any part of it). Any liabilities are hereby expressly disclaimed.

Project Ireland 2040
Building Ireland's Future

Rev	Date	Drn	Chk'd	App'd	Description
M01	FEB 2023	GZ	EE	SMG	ISSUED FOR PHASE 4: PLANNING

Client

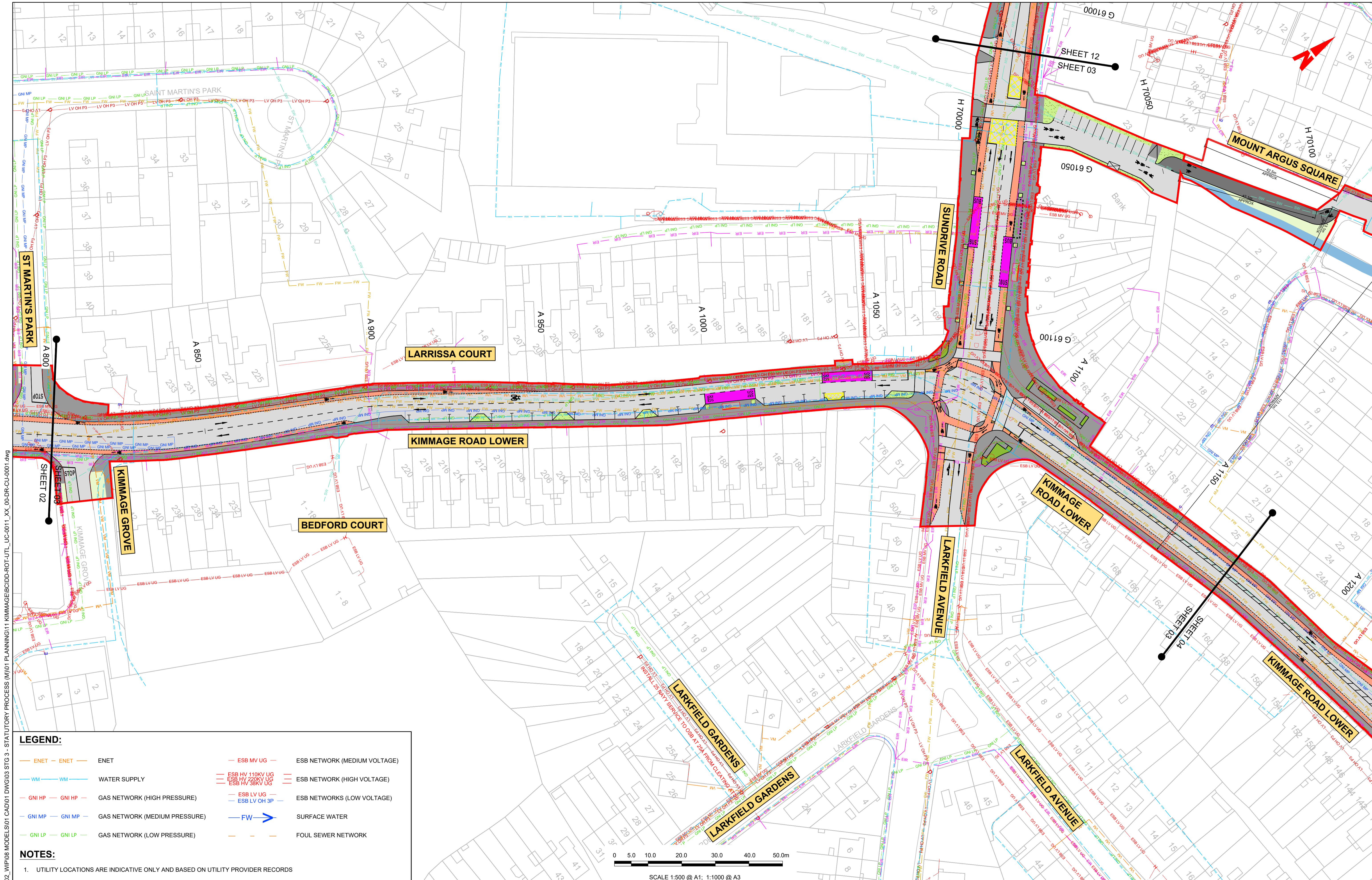
NTA
Údarás Náisiúnta Iompair
National Transport Authority

Engineering Designer

FROD
TYPSA

Programme Title		BUSCONNECTS DUBLIN CORE BUS CORRIDORS INFRASTRUCTURE WORKS			
Drawing Title		KIMMAGE TO CITY CENTRE CORE BUS CORRIDOR SCHEME COMBINED EXISTING UTILITIES RECORDS			
Date	Scale	Drawn	Checked	Approved	
FEB 2023	1:500 @ A1 1:1000 @ A3	DS	EE	SMG	
Programme Code	Originator Code	QMS Code	Sheet Number	Status	Rev
BCIDD	ROT		01 of 14	A	M01

DO NOT SCALE USE FIGURED DIMENSIONS ONLY

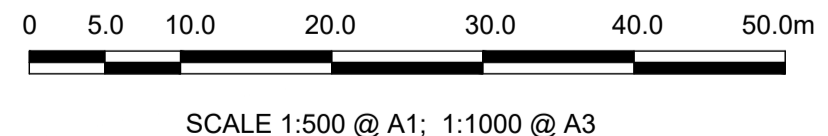


LEGEND:

ENET	ENET	ESB MV UG	ESB NETWORK (MEDIUM VOLTAGE)
WM	WATER SUPPLY	ESB HV 110KV UG	ESB NETWORK (HIGH VOLTAGE)
GNI HP	GAS NETWORK (HIGH PRESSURE)	ESB HV 220KV UG	
GNI MP	GAS NETWORK (MEDIUM PRESSURE)	ESB HV 38KV UG	
GNI LP	GAS NETWORK (LOW PRESSURE)	ESB LV UG	ESB NETWORKS (LOW VOLTAGE)
		ESB LV OH 3P	
		FW	SURFACE WATER
			FOUL SEWER NETWORK

NOTES:

- UTILITY LOCATIONS ARE INDICATIVE ONLY AND BASED ON UTILITY PROVIDER RECORDS



Disclaimer

a. © National Transport Authority (NTA) 2022. This drawing is confidential and the copyright in it is owned by NTA. This drawing must not be either loaned, copied or otherwise reproduced in whole or in part or used for any purpose without the prior permission of NTA.

b. This drawing is to be used for the design element identified in the title block. Other information shown is to be considered indicative only. The drawing is to be read in conjunction with all other relevant design drawings.

c. O.S. data used for plans are printed under © Ordnance Survey Ireland Government of Ireland. All rights reserved. Licence Number 2022/OSI_NMA_180 National Transport Authority. All elevations are in metres and relate to OSi Geoid Model (OSGM15) Mean Head. All Co-ordinates are in Irish Transverse Mercator Grid (ITM) as defined by OSi active local GPS station.

d. Information concerning the position of apparatus shown on this drawing is based on drawings supplied by the utility owners and/or the utility works contractor, whilst every care has been taken in the preparation of this drawing, positions should be taken as approximate and are intended for general guidance only and no representation is made by the NTA as to the accuracy, completeness, sufficiency or otherwise of this drawing and the position of the apparatus. The information contained herein does not purport to be comprehensive or final as the apparatus is subject to being altered and/or superseded. Recipients should not rely on this information. Any liabilities are hereby expressly disclaimed.

e. The information contained herein has been provided by the NTA but does not purport to be comprehensive or final. Recipients should not rely on the information. Neither the NTA nor any of its directors, officers, employees, agents, stakeholders or advisers make any representation or warranty as to, or accept any liability or responsibility in relation to, the adequacy, accuracy, reasonableness or completeness of the information provided as part of this document or any matter on which the information is based (including but not limited to loss or damage arising as a result of reliance by recipients on the information or any part of it). Any liabilities are hereby expressly disclaimed.



Rev	Date	Drm	Chk'd	App'd	Description
M01	FEB 2023	GZ	EE	SMG	ISSUED FOR PHASE 4: PLANNING

Client: **NTA**
Udárás Náisiúnta Iompair
National Transport Authority

Engineering Designer: **PROD**
TYPSA

Date: FEB 2023
Scale: 1:500 @ A1
1:1000 @ A3

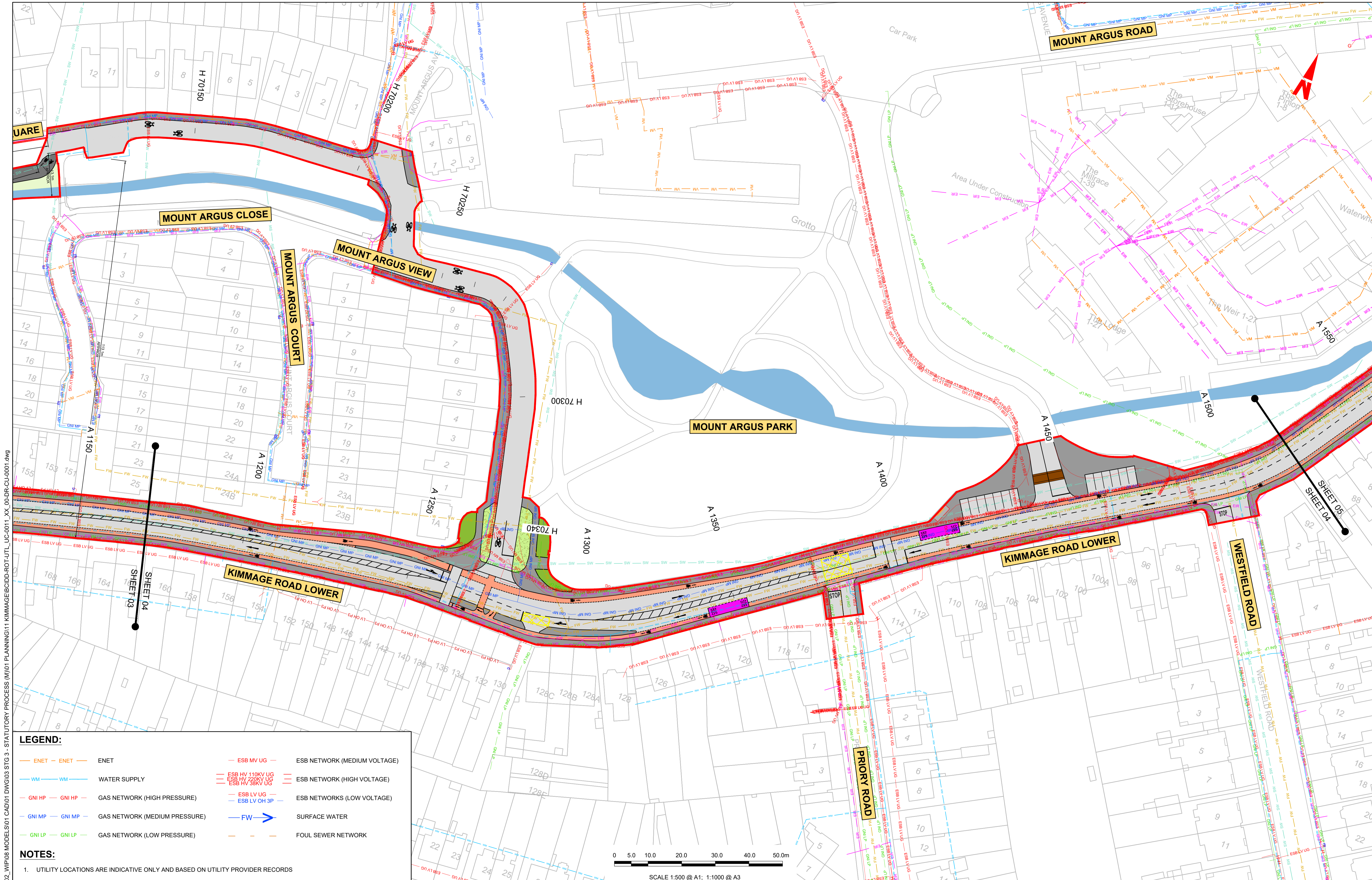
Programme Code: BCIDD
Originator Code: ROT

Drawn: DS
Checked: EE
Approved: SMG

Programme Title: BUSCONNECTS DUBLIN CORE BUS CORRIDORS INFRASTRUCTURE WORKS			
Drawing Title: KIMMAGE TO CITY CENTRE CORE BUS CORRIDOR SCHEME COMBINED EXISTING UTILITIES RECORDS			
Drawing File Name: BCIDD-ROT-UTL_UC-0011_XX_00-DR-CU-0003	Sheet Number: 03 of 14	Status: A	Rev: M01

DO NOT SCALE USE FIGURED DIMENSIONS ONLY

\\produbp1\U201919\17117-02_WIP\08 MODELS\01 CAD\01 PLANNING\11 KIMMAGE\BCIDD-ROT-UTL_UC-0011_XX_00-DR-CU-0001.dwg

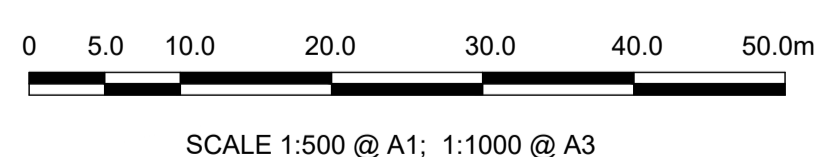


LEGEND:

— ENET —	ENET	— ESB MV UG —	ESB NETWORK (MEDIUM VOLTAGE)
— WM —	WATER SUPPLY	— ESB HV 110KV UG —	ESB NETWORK (HIGH VOLTAGE)
— GNI HP —	GAS NETWORK (HIGH PRESSURE)	— ESB HV 220KV UG —	ESB NETWORK (HIGH VOLTAGE)
— GNI MP —	GAS NETWORK (MEDIUM PRESSURE)	— ESB LV UG —	ESB NETWORKS (LOW VOLTAGE)
— GNI LP —	GAS NETWORK (LOW PRESSURE)	— ESB LV OH 3P —	ESB NETWORKS (LOW VOLTAGE)
		— FW —	SURFACE WATER
		— — —	FOUL SEWER NETWORK

NOTES:

1. UTILITY LOCATIONS ARE INDICATIVE ONLY AND BASED ON UTILITY PROVIDER RECORDS



Disclaimer:

a. © National Transport Authority (NTA) 2022. This drawing is confidential and the copyright in it is owned by NTA. This drawing must not be either loaned, copied or otherwise reproduced in whole or in part or used for any purpose without the prior permission of NTA.

b. This drawing is to be used for the design element identified in the titleblock. Other information shown is to be considered indicative only. The drawing is to be read in conjunction with all other relevant design drawings.

c. O.S. data used for plans are printed under © Ordnance Survey Ireland Government of Ireland. All rights reserved. Licence Number 2022/OSI_NMA_180 National Transport Authority. All elevations are in metres and relate to OSI Geoid Model (OSGM15) Mean Head. All Co-ordinates are in Irish Transverse Mercator Grid (ITM) as defined by OSI active local GPS station.

d. Information concerning the position of apparatus shown on this drawing is based on drawings supplied by the utility owners and/or the utility works contractor, whilst every care has been taken in the preparation of this drawing, positions should be taken as approximate and are intended for general guidance only and no representation is made by the NTA as to the accuracy, completeness, sufficiency or otherwise of this drawing and the position of the apparatus. The information contained herein does not purport to be comprehensive or final as the apparatus is subject to being altered and/or superceded. Recipients should not rely on this information. Any liabilities are hereby expressly disclaimed.

e. The information contained herein has been provided by the NTA but does not purport to be comprehensive or final. Recipients should not rely on the information. Neither the NTA nor any of its directors, officers, employees, agents, stakeholders or advisers make any representation or warranty as to, or accept any liability or responsibility in relation to, the adequacy, accuracy, reasonableness or completeness of the information provided as part of this document or any matter on which the information is based (including but not limited to loss or damage arising as a result of reliance by recipients on the information or any part of it). Any liabilities are hereby expressly disclaimed.



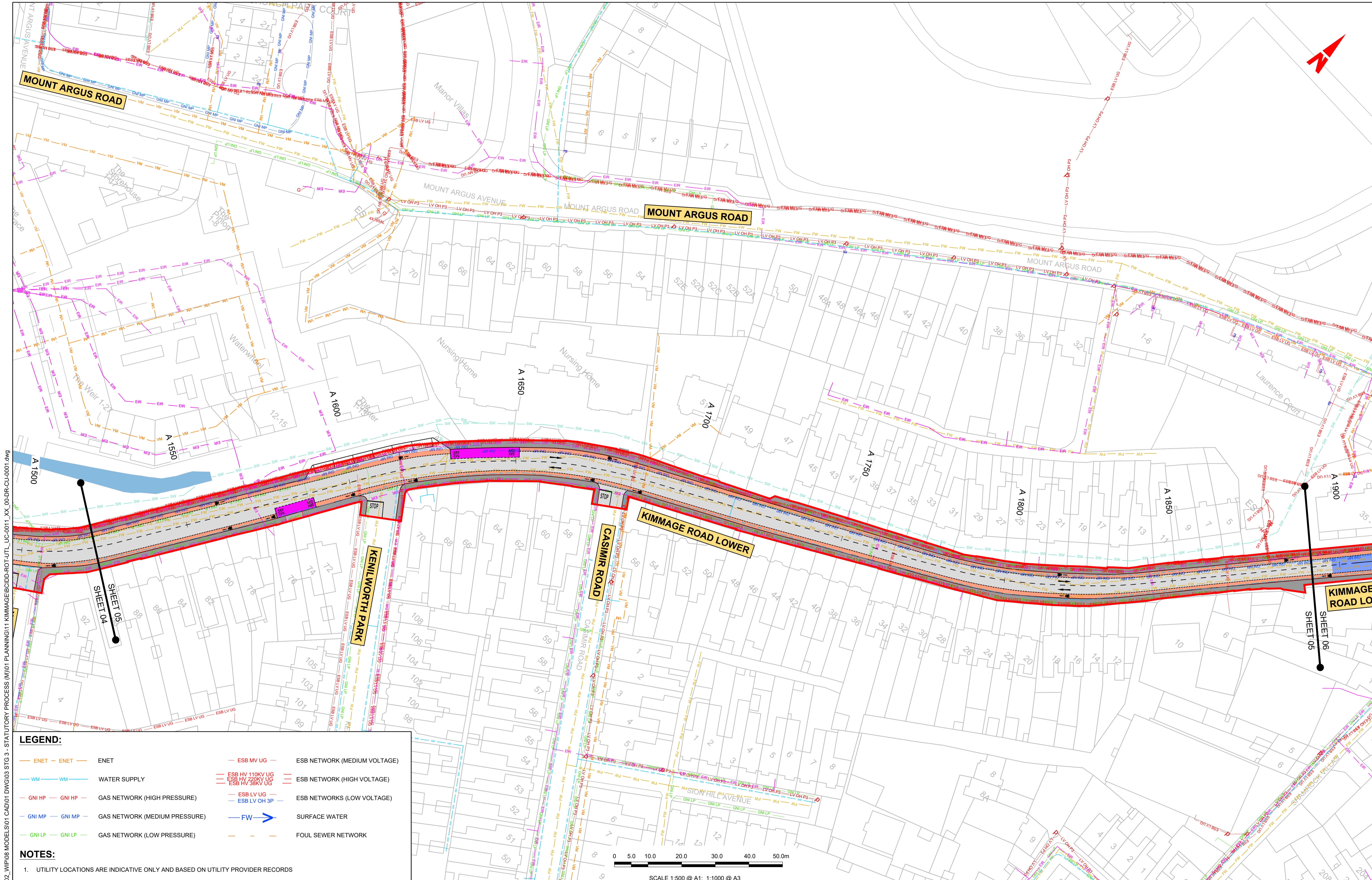
Rev	Date	Drn	Chk'd	App'd	Description
M01	FEB 2023	GZ	EE	SMG	ISSUED FOR PHASE 4: PLANNING

<p>Údaráis Náisiúnta Iompair National Transport Authority</p>		<p>Engineering Designer</p>		
Date	Scale	Drawn	Checked	Approved
FEB 2023	1:500 @ A1 1:1000 @ A3	DS	EE	SMG
Programme Code	Originator Code	QMS Code		
BCIDD	ROT			

<p>Programme Title</p> <p>BUSCONNECTS DUBLIN</p> <p>CORE BUS CORRIDORS INFRASTRUCTURE WORKS</p>			
<p>Drawing Title</p> <p>KIMMAGE TO CITY CENTRE CORE BUS CORRIDOR SCHEME</p> <p>COMBINED EXISTING UTILITIES RECORDS</p>			
Drawing File Name	Sheet Number	Status	Rev
BCIDD-ROT-UTL_UC-0011_XX_00-DR-CU-0004	04 of 14	A	M01

DO NOT SCALE USE FIGURED DIMENSIONS ONLY

\\produbp1\j2019\1911719117-02_WIP\08 MODELS\01 CAD\01 PLANNING\11 KIMMAGE\BIDD-ROT-UTL_UC-0011_XX_00-DR-CU-0001.dwg

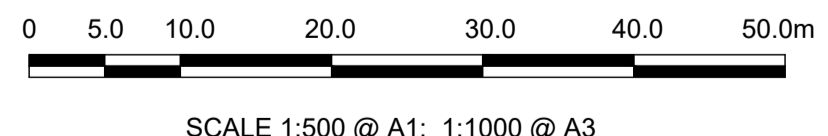


LEGEND:

ENET	ENET	ESB MV UG	ESB NETWORK (MEDIUM VOLTAGE)
WM	WATER SUPPLY	ESB HV 110KV UG	ESB NETWORK (HIGH VOLTAGE)
GNI HP	GAS NETWORK (HIGH PRESSURE)	ESB HV 220KV UG	ESB NETWORK (HIGH VOLTAGE)
GNI MP	GAS NETWORK (MEDIUM PRESSURE)	ESB HV 38KV UG	ESB NETWORK (HIGH VOLTAGE)
GNI LP	GAS NETWORK (LOW PRESSURE)	ESB LV UG	ESB NETWORKS (LOW VOLTAGE)
		ESB LV OH 3P	ESB NETWORKS (LOW VOLTAGE)
		FW	SURFACE WATER
			FOUL SEWER NETWORK

NOTES:

- UTILITY LOCATIONS ARE INDICATIVE ONLY AND BASED ON UTILITY PROVIDER RECORDS



\\odp\p1\j20191117\19117-02_WIP\08 MODELS\01 CAD\01 PLANNING\11 KIMMAGE\BCIDD-ROT-UTL_UC-0011_XX_00-DR-CU-0001.dwg

Disclaimer:

a. © National Transport Authority (NTA) 2022. This drawing is confidential and the copyright in it is owned by NTA. This drawing must not be either loaned, copied or otherwise reproduced in whole or in part or used for any purpose without the prior permission of NTA.

b. This drawing is to be used for the design element identified in the title block. Other information shown is to be considered indicative only. The drawing is to be read in conjunction with all other relevant design drawings.

c. O.S. data used for plans are printed under © Ordnance Survey Ireland Government of Ireland. All rights reserved. Licence Number 2022/OSI_NMA_180 National Transport Authority. All elevations are in metres and relate to OSI Geoid Model (OSGM15) Mean Head. All Co-ordinates are in Irish Transverse Mercator Grid (ITM) as defined by OSI active local GPS station.

d. Information concerning the position of apparatus shown on this drawing is based on drawings supplied by the utility owners and/or the utility works contractor, whilst every care has been taken in the preparation of this drawing, positions should be taken as approximate and are intended for general guidance only and no representation is made by the NTA as to the accuracy, completeness, sufficiency or otherwise of this drawing and the position of the apparatus. The information contained herein does not purport to be comprehensive or final as the apparatus is subject to being altered and/or superceded. Recipients should not rely on this information. Any liabilities are hereby expressly disclaimed.

e. The information contained herein has been provided by the NTA but does not purport to be comprehensive or final. Recipients should not rely on the information. Neither the NTA nor any of its directors, officers, employees, agents, stakeholders or advisers make any representation or warranty as to, or accept any liability or responsibility in relation to, the adequacy, accuracy, reasonableness or completeness of the information provided as part of this document or any matter on which the information is based (including but not limited to loss or damage arising as a result of reliance by recipients on the information or any part of it). Any liabilities are hereby expressly disclaimed.

Rev	Date	Drn	Chk'd	App'd	Description
M01	FEB 2023	GZ	EE	SMG	ISSUED FOR PHASE 4: PLANNING

Client

Engineering Designer

Date	Scale	Drawn	Checked	Approved
FEB 2023	1:500 @ A1 1:1000 @ A3	DS	EE	SMG

Programme Title

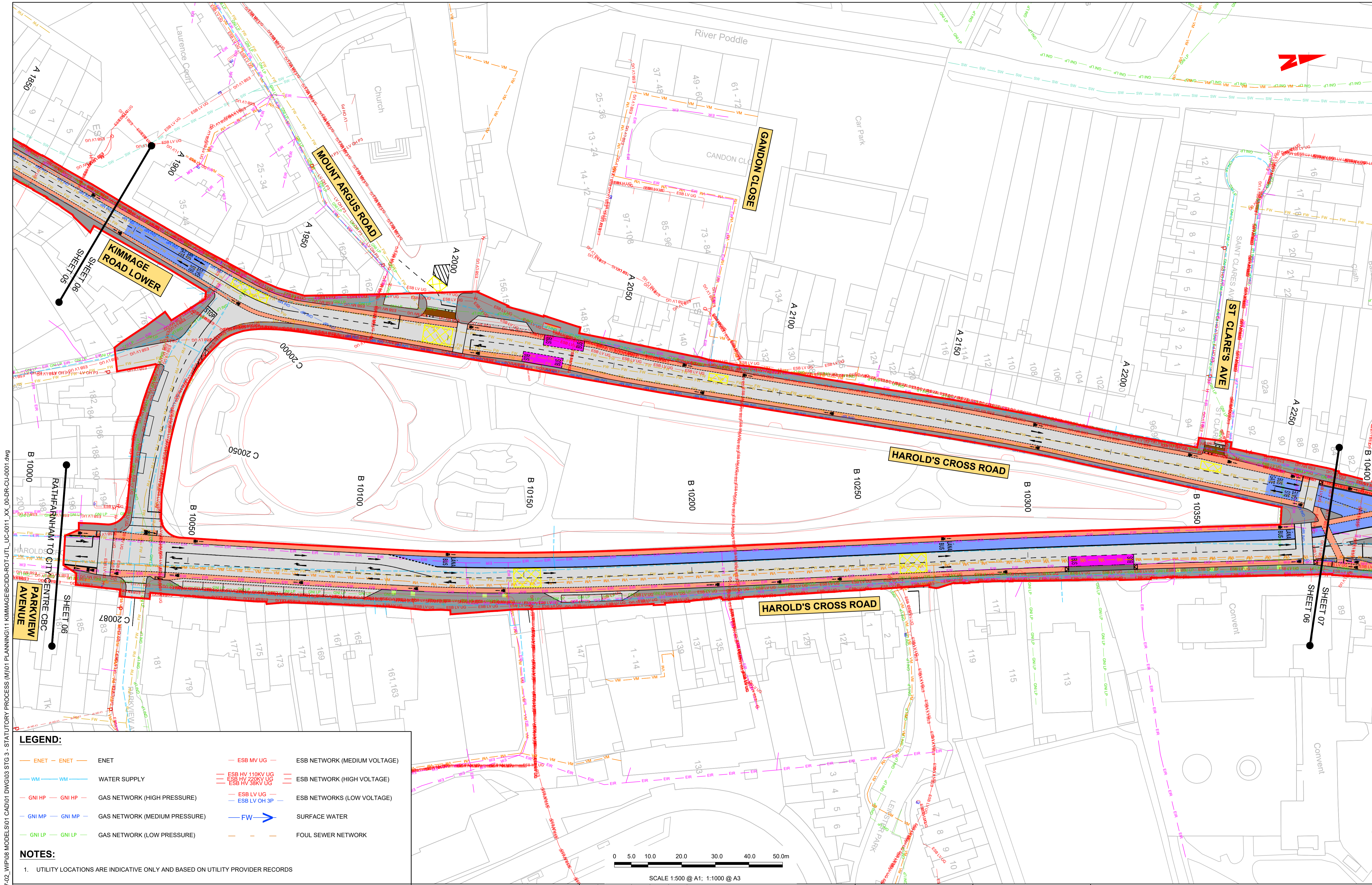
**BUSCONNECTS DUBLIN
CORE BUS CORRIDORS INFRASTRUCTURE WORKS**

Drawing Title

KIMMAGE TO CITY CENTRE CORE BUS CORRIDOR SCHEME
COMBINED EXISTING UTILITIES RECORDS

Drawing File Name	Sheet Number	Status	Rev
BCIDD-ROT-UTL_UC-0011_XX_00-DR-CU-0005	05 of 14	A	M01

DO NOT SCALE USE FIGURED DIMENSIONS ONLY

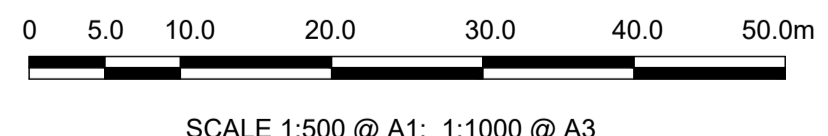


LEGEND:

	ENET	ENET		ESB MV UG	ESB NETWORK (MEDIUM VOLTAGE)
	WM	WATER SUPPLY		ESB HV 110KV UG	ESB NETWORK (HIGH VOLTAGE)
	GNI HP	GAS NETWORK (HIGH PRESSURE)		ESB HV 220KV UG	
	GNI MP	GAS NETWORK (MEDIUM PRESSURE)		ESB HV 38KV UG	
	GNI LP	GAS NETWORK (LOW PRESSURE)		ESB LV UG	ESB NETWORKS (LOW VOLTAGE)
				ESB LV OH 3P	
				FW	SURFACE WATER
					FOUL SEWER NETWORK

NOTES:

- UTILITY LOCATIONS ARE INDICATIVE ONLY AND BASED ON UTILITY PROVIDER RECORDS



\\p01\p01\19117-02_WIP08 MODELS01 CAD01 PLANNING11 KIMMAGE\BDD-ROT-UTL_UC-0011_XX_00-DR-CU-0001.dwg

Disclaimer:

a. © National Transport Authority (NTA) 2022. This drawing is confidential and the copyright in it is owned by NTA. This drawing must not be either loaned, copied or otherwise reproduced in whole or in part or used for any purpose without the prior permission of NTA.

b. This drawing is to be used for the design element identified in the titlebox. Other information shown is to be considered indicative only. The drawing is to be read in conjunction with all other relevant design drawings.

c. O.S. data used for plans are printed under © Ordnance Survey Ireland Government of Ireland. All rights reserved. Licence Number 2022/OSI_NMA_180 National Transport Authority. All elevations are in metres and relate to OSI Geoid Model (OSGM15) Mean Head. All Co-ordinates are in Irish Transverse Mercator Grid (ITM) as defined by OSI active local GPS station.

d. Information concerning the position of apparatus shown on this drawing is based on drawings supplied by the utility owners and/or the utility works contractor, whilst every care has been taken in the preparation of this drawing, positions should be taken as approximate and are intended for general guidance only and no representation is made by the NTA as to the accuracy, completeness, sufficiency or otherwise of this drawing and the position of the apparatus. The information contained herein does not purport to be comprehensive or final as the apparatus is subject to being altered and/or superseded. Recipients should not rely on this information. Any liabilities are hereby expressly disclaimed.

e. The information contained herein has been provided by the NTA but does not purport to be comprehensive or final. Recipients should not rely on the information. Neither the NTA nor any of its directors, officers, employees, agents, stakeholders or advisers make any representation or warranty as to, or accept any liability or responsibility in relation to, the adequacy, accuracy, reasonableness or completeness of the information provided as part of this document or any matter on which the information is based (including but not limited to loss or damage arising as a result of reliance by recipients on the information or any part of it). Any liabilities are hereby expressly disclaimed.

Rev	Date	Drn	Chk'd	App'd	Description
M01	FEB 2023	GZ	EE	SMG	ISSUED FOR PHASE 4: PLANNING

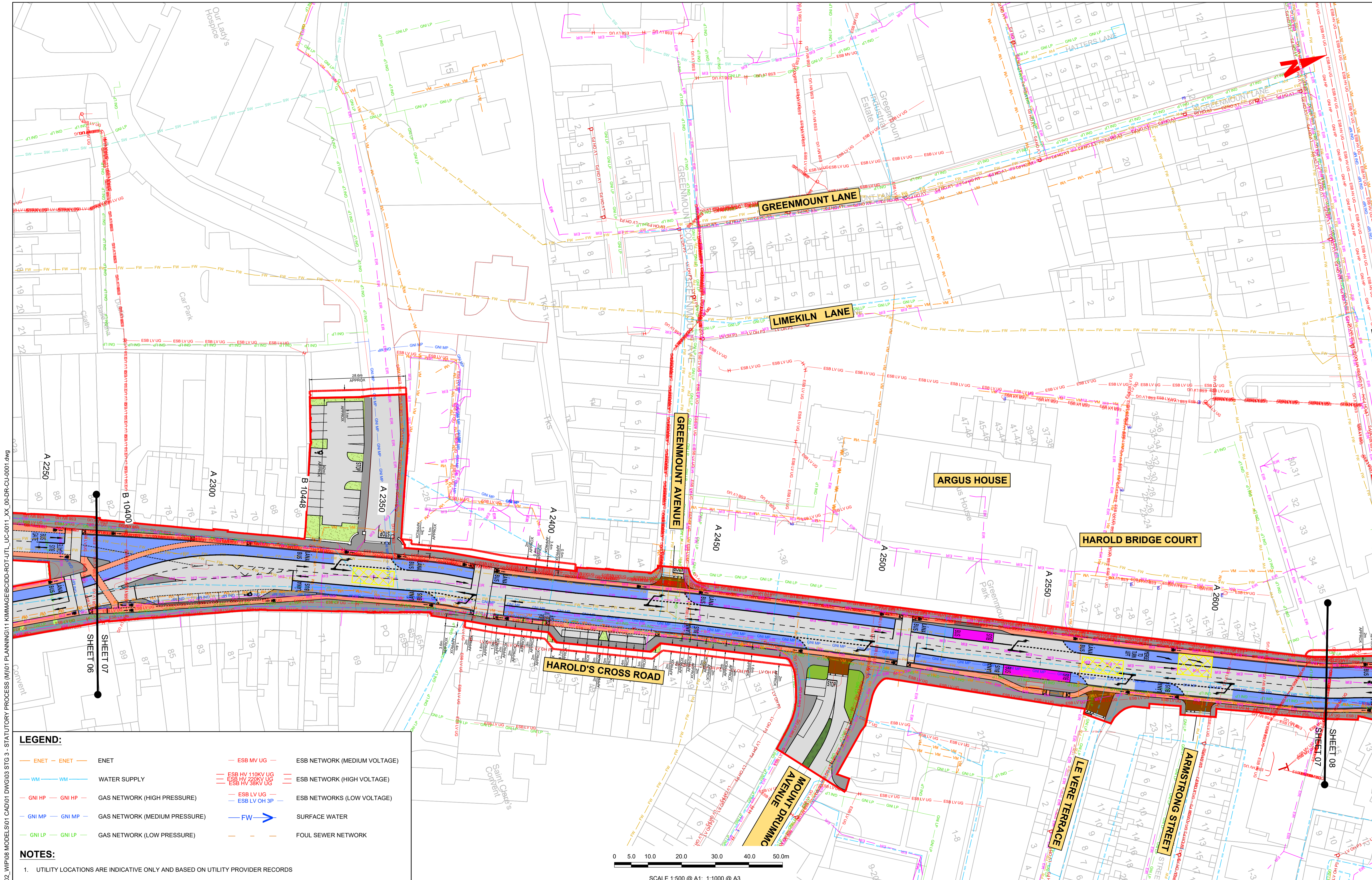
Client

Engineering Designer

Date	Scale	Drawn	Checked	Approved
FEB 2023	1:500 @ A1 1:1000 @ A3	DS	EE	SMG

Programme Title				BUSCONNECTS DUBLIN CORE BUS CORRIDORS INFRASTRUCTURE WORKS			
Drawing Title				KIMMAGE TO CITY CENTRE CORE BUS CORRIDOR SCHEME COMBINED EXISTING UTILITIES RECORDS			
Drawing File Name	Sheet Number	Status	Rev	Drawing File Name	Sheet Number	Status	Rev
BCIDD-ROT-UTL_UC-0011_XX_00-DR-CU-0006	06 of 14	A	M01	BCIDD-ROT-UTL_UC-0011_XX_00-DR-CU-0006	06 of 14	A	M01

DO NOT SCALE USE FIGURED DIMENSIONS ONLY



LEGEND:

— ENET —	ENET	— ESB MV UG —	ESB NETWORK (MEDIUM VOLTAGE)
— WM —	WATER SUPPLY	— ESB HV 110KV UG —	ESB NETWORK (HIGH VOLTAGE)
— GNI HP —	GAS NETWORK (HIGH PRESSURE)	— ESB HV 220KV UG —	
— GNI MP —	GAS NETWORK (MEDIUM PRESSURE)	— ESB HV 38KV UG —	
— GNI LP —	GAS NETWORK (LOW PRESSURE)	— ESB LV UG —	ESB NETWORKS (LOW VOLTAGE)
		— ESB LV OH 3P —	
		— FW —	SURFACE WATER
		— —	FOUL SEWER NETWORK

NOTES:

1. UTILITY LOCATIONS ARE INDICATIVE ONLY AND BASED ON UTILITY PROVIDER RECORDS



SCALE 1:500 @ A1; 1:1000 @ A3

Disclaimer:

a. © National Transport Authority (NTA) 2022. This drawing is confidential and the copyright in it is owned by NTA. This drawing must not be either loaned, copied or otherwise reproduced in whole or in part or used for any purpose without the prior permission of NTA.

b. This drawing is to be used for the design element identified in the titleblock. Other information shown is to be considered indicative only. The drawing is to be read in conjunction with all other relevant design drawings.

c. O.S. data used for plans are printed under © Ordnance Survey Ireland Government of Ireland. All rights reserved. Licence Number 2022/OSI_NMA_180 National Transport Authority. All elevations are in metres and relate to OSI Geoid Model (OSGM15) Mean Head. All Co-ordinates are in Irish Transverse Mercator Grid (ITM) as defined by OSI active local GPS station.

d. Information concerning the position of apparatus shown on this drawing is based on drawings supplied by the utility owners and/or the utility works contractor, whilst every care has been taken in the preparation of this drawing, positions should be taken as approximate and are intended for general guidance only and no representation is made by the NTA as to the accuracy, completeness, sufficiency or otherwise of this drawing and the position of the apparatus. The information contained herein does not purport to be comprehensive or final as the apparatus is subject to being altered and/or superceded. Recipients should not rely on this information. Any liabilities are hereby expressly disclaimed.



Rev	Date	Drm	Chk'd	App'd	Description
M01	FEB 2023	GZ	EE	SMG	ISSUED FOR PHASE 4: PLANNING

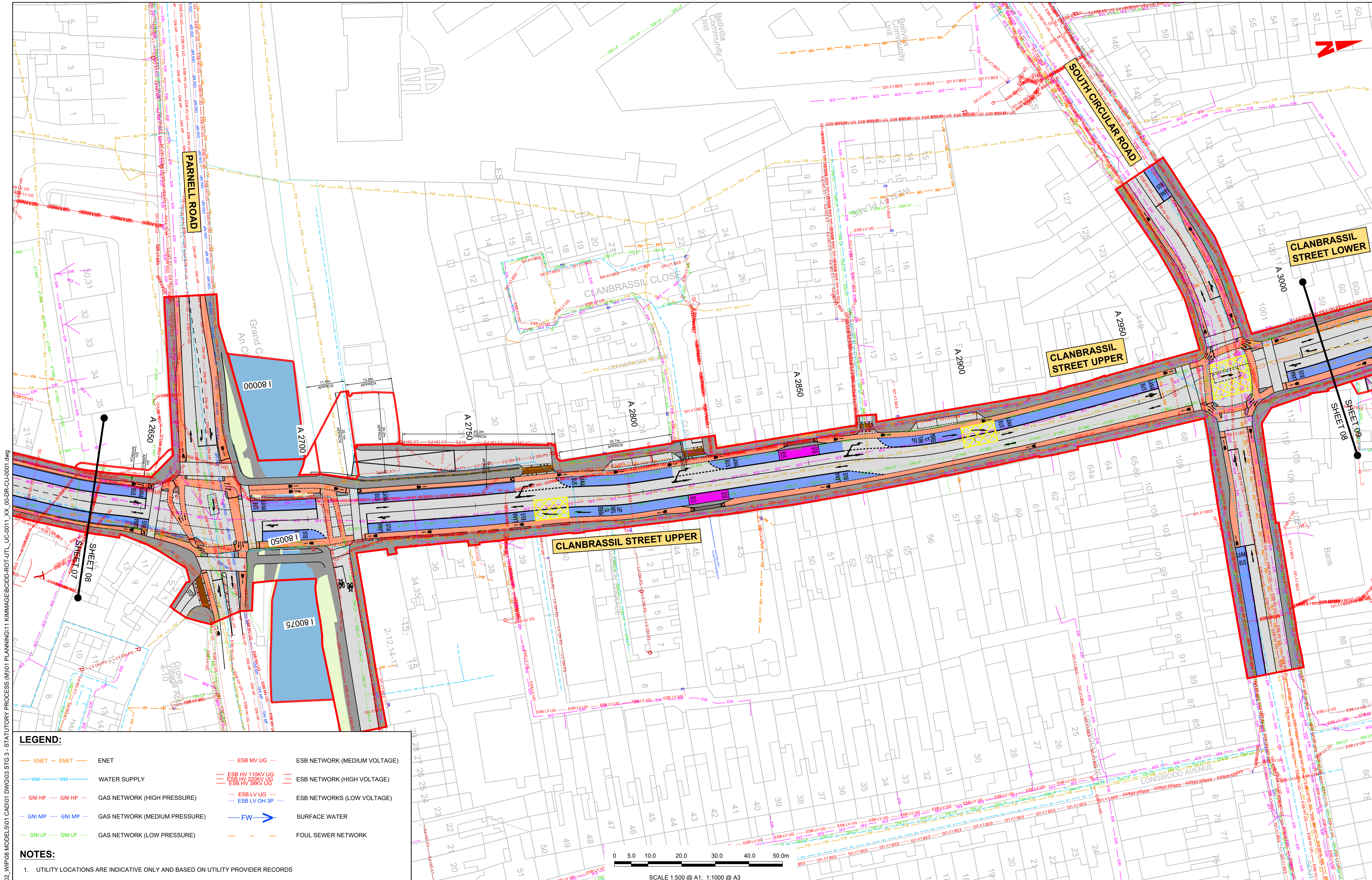
Client
NTA
 Údarás Náisiúnta Iompair
 National Transport Authority

Engineering Designer
PROD
 TYPSA

Programme Title BUSCONNECTS DUBLIN CORE BUS CORRIDORS INFRASTRUCTURE WORKS	
Drawing Title KIMMAGE TO CITY CENTRE CORE BUS CORRIDOR SCHEME COMBINED EXISTING UTILITIES RECORDS	
Drawing File Name BCIDD-ROT-UTL_UC-0011_XX_00-DR-CU-0007	Sheet Number 07 of 14
Status A	Rev M01

DO NOT SCALE USE FIGURED DIMENSIONS ONLY

W:\000000\1911719117-02-WIPO08 MODELS\01 CAD\01 PLANNING\11 KIMMAGE\BCIDD-ROT-UTL_UC-0011_XX_00-DR-CU-0001.dwg



LEGEND:

ENET	ENET	ESB MV UG	ESB NETWORK (MEDIUM VOLTAGE)
WM	WATER SUPPLY	ESB HV 110KV UG	ESB NETWORK (HIGH VOLTAGE)
GNI HP	GAS NETWORK (HIGH PRESSURE)	ESB LV UG	ESB NETWORKS (LOW VOLTAGE)
GNI MP	GAS NETWORK (MEDIUM PRESSURE)	ESB LV OH 3P	
GNI LP	GAS NETWORK (LOW PRESSURE)	FW	SURFACE WATER
			FOUL SEWER NETWORK

NOTES:

- UTILITY LOCATIONS ARE INDICATIVE ONLY AND BASED ON UTILITY PROVIDER RECORDS



Disclaimer:

a. © National Transport Authority (NTA) 2022. This drawing is confidential and the copyright in it is owned by NTA. This drawing must not be either loaned, copied or otherwise reproduced in whole or in part or used for any purpose without the prior permission of NTA.

b. This drawing is to be used for the design element identified in the title block. Other information shown is to be considered indicative only. The drawing is to be read in conjunction with all other relevant design drawings.

c. O.S. data used for plans are printed under © Ordnance Survey Ireland Government of Ireland. All rights reserved. Licence Number 2022/OSI_NMA_180 National Transport Authority. All elevations are in metres and relate to OSI Geoid Model (OSGM15) Mean Head. All Co-ordinates are in Irish Transverse Mercator Grid (ITM) as defined by OSI active local GPS station.

d. Information concerning the position of apparatus shown on this drawing is based on drawings supplied by the utility owners and/or the utility works contractor, whilst every care has been taken in the preparation of this drawing, positions should be taken as approximate and are intended for general guidance only and no representation is made by the NTA as to the accuracy, completeness, sufficiency or otherwise of this drawing and the position of the apparatus. The information contained herein does not purport to be comprehensive or final as the apparatus is subject to being altered and/or superseded. Recipients should not rely on this information. Any liabilities are hereby expressly disclaimed.

e. The information contained herein has been provided by the NTA but does not purport to be comprehensive or final. Recipients should not rely on the information. Neither the NTA nor any of its directors, officers, employees, agents, stakeholders or advisers make any representation or warranty as to, or accept any liability or responsibility in relation to, the adequacy, accuracy, reasonableness or completeness of the information provided as part of this document or any matter on which the information is based (including but not limited to loss or damage arising as a result of reliance by recipients on the information or any part of it). Any liabilities are hereby expressly disclaimed.

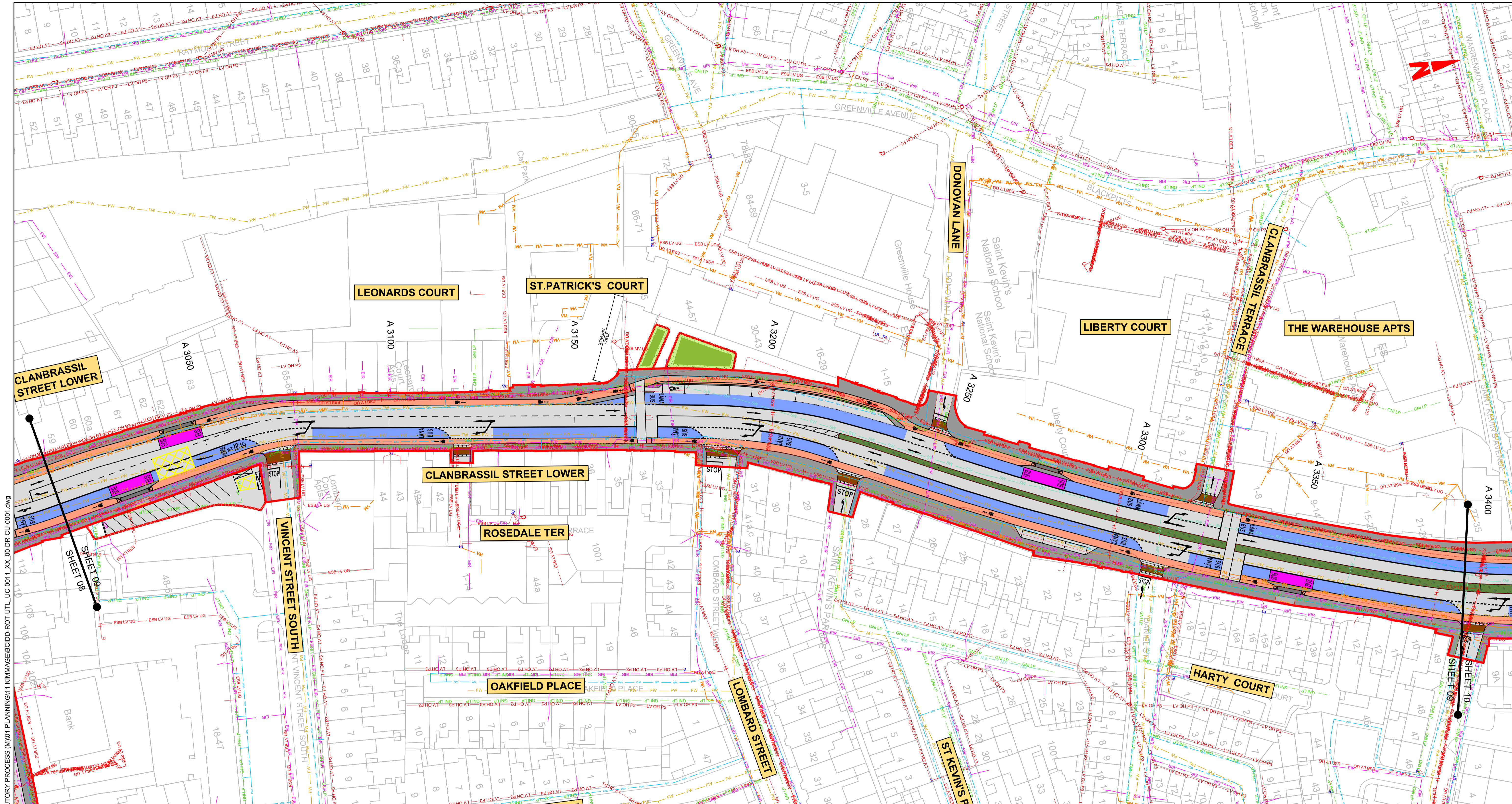
Rev	Date	Drn	Chk'd	App'd	Description
M01	FEB 2023	GZ	EE	SMG	ISSUED FOR PHASE 4: PLANNING

 Údarás Náisiúnta Iompair National Transport Authority		 TYPSA		
Date	Scale	Drawn	Checked	Approved
FEB 2023	1:500 @ A1 1:1000 @ A3	DS	EE	SMG
Programme Code	Originator Code	QMS Code		
BCIDD	ROT			

Programme Title BUSCONNECTS DUBLIN CORE BUS CORRIDORS INFRASTRUCTURE WORKS			
Drawing Title KIMMAGE TO CITY CENTRE CORE BUS CORRIDOR SCHEME COMBINED EXISTING UTILITIES RECORDS			
Drawing File Name	Sheet Number	Status	Rev
BCIDD-ROT-UTL_UC-0011_XX_00-DR-CU-0008	08 of 14	A	M01

DO NOT SCALE USE FIGURED DIMENSIONS ONLY

W:\00-DR-CU-0001.dwg
 STATUTORY PROCESS (M)01 PLANNING\11 KIMMAGE\BDD-ROT-UTL_UC-0011_XX_00-DR-CU-0001.dwg
 WIP\08 MODELS\01 CAD\01 1719117-02



LEGEND:

	ENET	ENET		ESB MV UG	ESB NETWORK (MEDIUM VOLTAGE)
	WM	WATER SUPPLY		ESB HV 110KV UG	ESB NETWORK (HIGH VOLTAGE)
	GNI HP	GAS NETWORK (HIGH PRESSURE)		ESB LV UG	ESB NETWORKS (LOW VOLTAGE)
	GNI MP	GAS NETWORK (MEDIUM PRESSURE)		ESB LV OH 3P	ESB NETWORKS (LOW VOLTAGE)
	GNI LP	GAS NETWORK (LOW PRESSURE)		FW	SURFACE WATER
					FOUL SEWER NETWORK

NOTES:

- UTILITY LOCATIONS ARE INDICATIVE ONLY AND BASED ON UTILITY PROVIDER RECORDS



Disclaimer:

a. © National Transport Authority (NTA) 2022. This drawing is confidential and the copyright in it is owned by NTA. This drawing must not be either loaned, copied or otherwise reproduced in whole or in part or used for any purpose without the prior permission of NTA.

b. This drawing is to be used for the design element identified in the title block. Other information shown is to be considered indicative only. The drawing is to be read in conjunction with all other relevant design drawings.

c. O.S. data used for plans are printed under © Ordnance Survey Ireland Government of Ireland. All rights reserved. Licence Number 2022/OSI_NMA_180 National Transport Authority. All elevations are in metres and relate to OSI Geoid Model (OSGM15) Mean Head. All Co-ordinates are in Irish Transverse Mercator Grid (ITM) as defined by OSI active local GPS station.

d. Information concerning the position of apparatus shown on this drawing is based on drawings supplied by the utility owners and/or the utility works contractor, whilst every care has been taken in the preparation of this drawing, positions should be taken as approximate and are intended for general guidance only and no representation is made by the NTA as to the accuracy, completeness, sufficiency or otherwise of this information. The information is subject to being altered and/or superseded. Recipients should not rely on this information. Any liabilities are hereby expressly disclaimed.

e. The information contained herein has been provided by the NTA but does not purport to be comprehensive or final. Recipients should not rely on the information. Neither the NTA nor any of its directors, officers, employees, agents, stakeholders or advisers make any representation or warranty as to, or accept any liability or responsibility in relation to, the adequacy, accuracy, reasonableness or completeness of the information provided as part of this document or any matter on which the information is based (including but not limited to loss or damage arising as a result of reliance by recipients on the information or any part of it). Any liabilities are hereby expressly disclaimed.

Rev	Date	Drm	Chk'd	App'd	Description
M01	FEB 2023	GZ	EE	SMG	ISSUED FOR PHASE 4: PLANNING

Client: NTA
Údaráis Náisiúnta Iompair
National Transport Authority

Engineering Designer: IROD
TYPSA

Date: FEB 2023
Scale: 1:500 @ A1
1:1000 @ A3

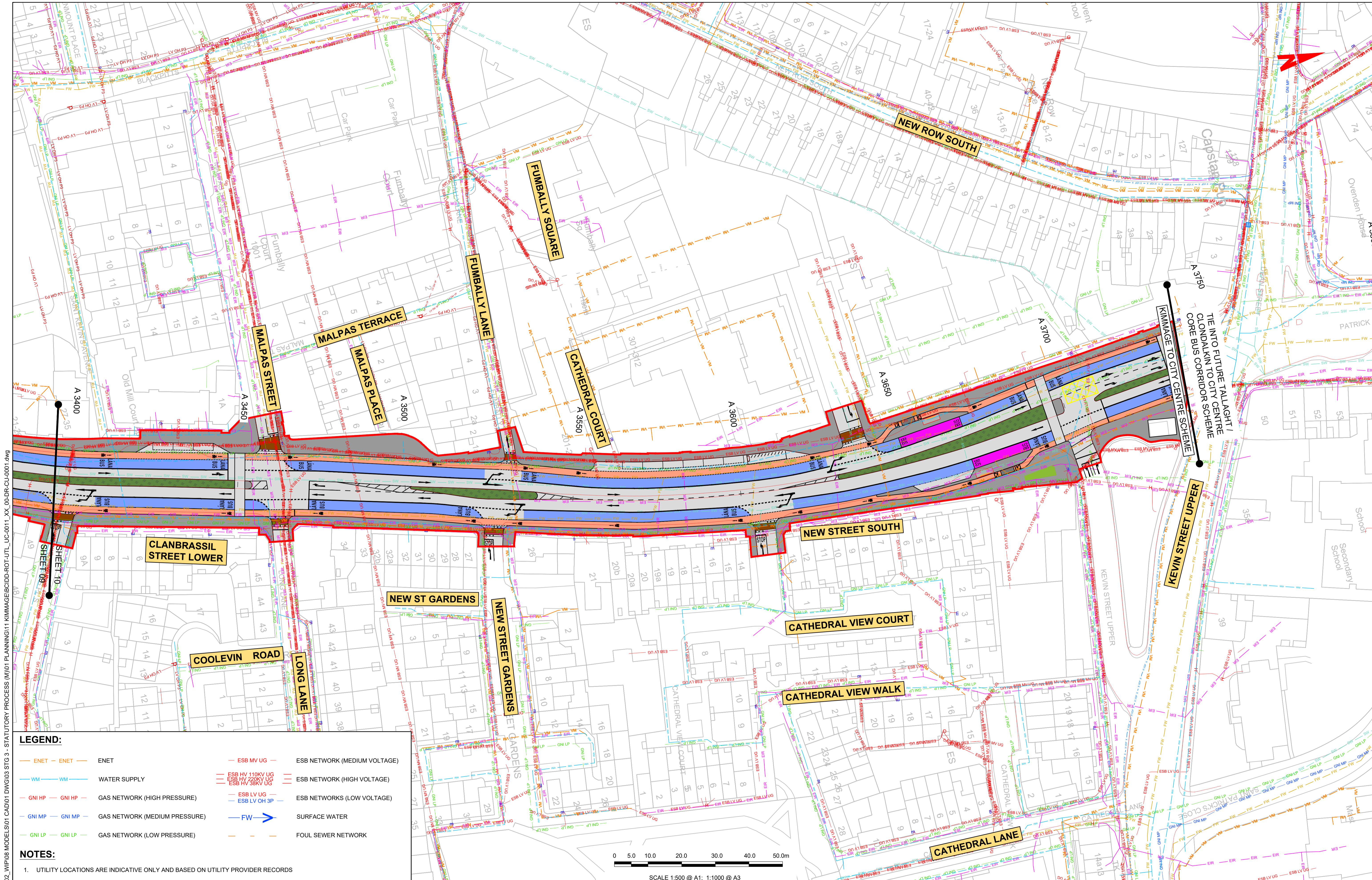
Programme Code: BCIDD
Originator Code: ROT

Drawn: DS
Checked: EE
Approved: SMG

Programme Title BUSCONNECTS DUBLIN CORE BUS CORRIDORS INFRASTRUCTURE WORKS	
Drawing Title KIMMAGE TO CITY CENTRE CORE BUS CORRIDOR SCHEME COMBINED EXISTING UTILITIES RECORDS	
Drawing File Name BCIDD-ROT-UTL_UC-0011_XX_00-DR-CU-0009	Sheet Number 09 of 14
Status A	Rev M01

DO NOT SCALE USE FIGURED DIMENSIONS ONLY

\\prod08\p1\j2019\1911719117-02-WIPO8 MODELS\01 CAD\01 PLANNING\11 KIMMAGE\BIDD-ROT-UTL_UC-0011_XX_00-DR-CU-0001.dwg



LEGEND:

	ENET	ENET		ESB MV UG	ESB NETWORK (MEDIUM VOLTAGE)
	WM	WATER SUPPLY		ESB HV 110KV UG	ESB NETWORK (HIGH VOLTAGE)
	GNI HP	GAS NETWORK (HIGH PRESSURE)		ESB LV UG	ESB NETWORKS (LOW VOLTAGE)
	GNI MP	GAS NETWORK (MEDIUM PRESSURE)		ESB LV OH 3P	ESB NETWORKS (LOW VOLTAGE)
	GNI LP	GAS NETWORK (LOW PRESSURE)		FW	SURFACE WATER
					FOUL SEWER NETWORK

NOTES:

- UTILITY LOCATIONS ARE INDICATIVE ONLY AND BASED ON UTILITY PROVIDER RECORDS

W:\000000\01\1719117-02_WIP\08 MODELS\01 CAD\01 PLANNING\11 KIMMAGE\BCIDD-ROT-UTL_UC-0011_XX_00-DR-CU-0001.dwg
 SHEET 09
 SHEET 10

Disclaimer:

a. © National Transport Authority (NTA) 2022. This drawing is confidential and the copyright in it is owned by NTA. This drawing must not be either loaned, copied or otherwise reproduced in whole or in part or used for any purpose without the prior permission of NTA.

b. This drawing is to be used for the design element identified in the title block. Other information shown is to be considered indicative only. The drawing is to be read in conjunction with all other relevant design drawings.

c. O.S. data used for plans are printed under © Ordnance Survey Ireland Government of Ireland. All rights reserved. Licence Number 2022/OSI_NMA_180 National Transport Authority. All elevations are in metres and relate to OSI Geoid Model (OSGM15) Mean Head. All Co-ordinates are in Irish Transverse Mercator Grid (ITM) as defined by OSI active local GPS station.

d. Information concerning the position of apparatus shown on this drawing is based on drawings supplied by the utility owners and/or the utility works contractor, whilst every care has been taken in the preparation of this drawing, positions should be taken as approximate and are intended for general guidance only and no representation is made by the NTA as to the accuracy, completeness, sufficiency or otherwise of this information. The information contained herein does not purport to be comprehensive or final as the apparatus is subject to being altered and/or superseded. Recipients should not rely on this information. Any liabilities are hereby expressly disclaimed.

e. The information contained herein has been provided by the NTA but does not purport to be comprehensive or final. Recipients should not rely on the information. Neither the NTA nor any of its directors, officers, employees, agents, stakeholders or advisers make any representation or warranty as to, or accept any liability or responsibility in relation to, the adequacy, accuracy, reasonableness or completeness of the information provided as part of this document or any matter on which the information is based (including but not limited to loss or damage arising as a result of reliance by recipients on the information or any part of it). Any liabilities are hereby expressly disclaimed.

Project Ireland 2040
Building Ireland's Future

Rev	Date	Drn	Chk'd	App'd	Description
M01	FEB 2023	GZ	EE	SMG	ISSUED FOR PHASE 4: PLANNING

Client: **NTA**
Udaráis Náisiúnta Iompair
National Transport Authority

Engineering Designer: **CIROD**
TYPSA

Date: FEB 2023
Scale: 1:500 @ A1
1:1000 @ A3

Programme Code: BCIDD
Originator Code: ROT

Drawn: DS
Checked: EE
Approved: SMG

Programme Title: BUSCONNECTS DUBLIN CORE BUS CORRIDORS INFRASTRUCTURE WORKS			
Drawing Title: KIMMAGE TO CITY CENTRE CORE BUS CORRIDOR SCHEME COMBINED EXISTING UTILITIES RECORDS			
Drawing File Name: BCIDD-ROT-UTL_UC-0011_XX_00-DR-CU-0010	Sheet Number: 10 of 14	Status: A	Rev: M01

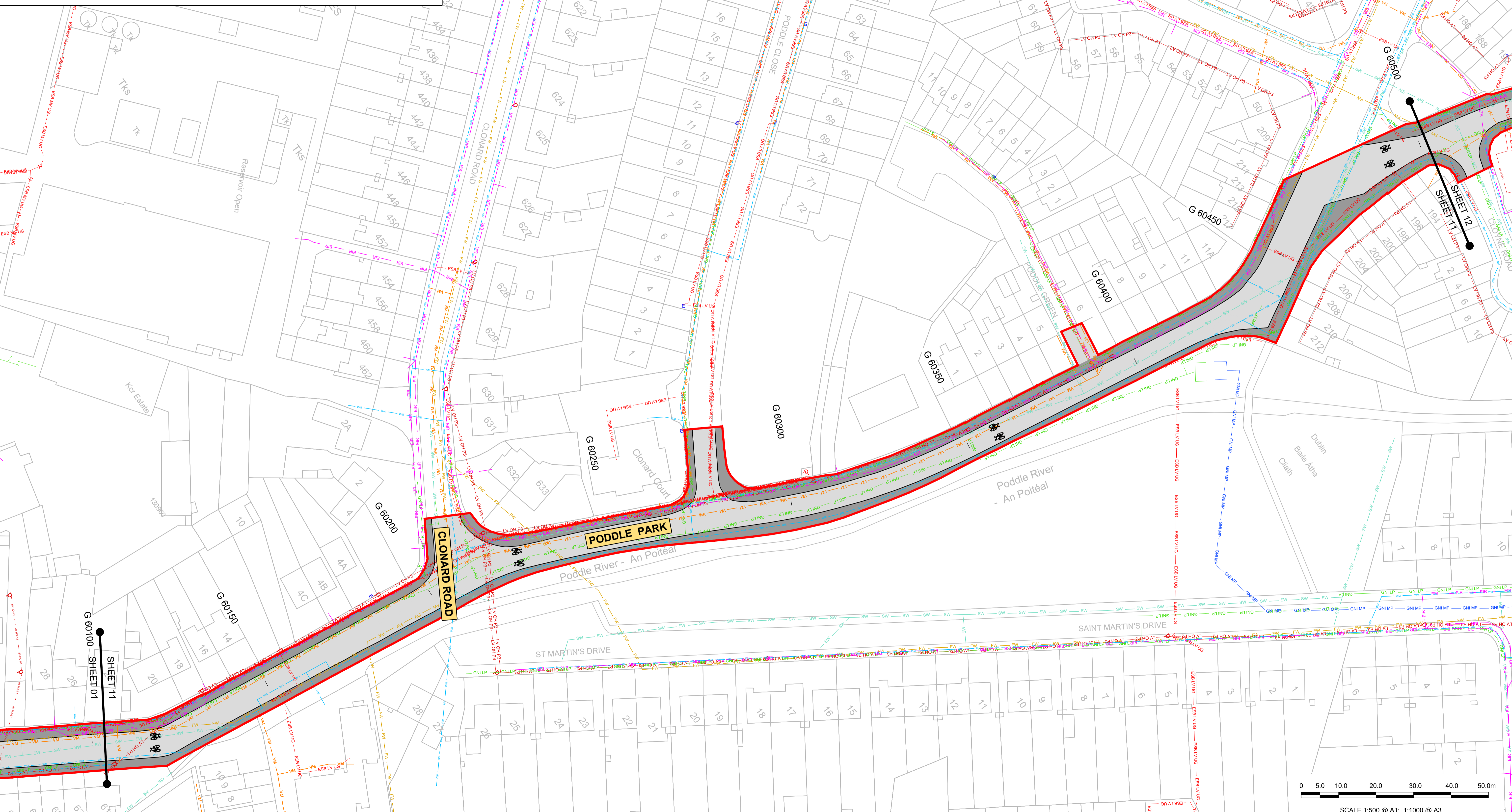
DO NOT SCALE USE FIGURED DIMENSIONS ONLY

LEGEND:

	ENET	ENET		ESB MV UG	ESB NETWORK (MEDIUM VOLTAGE)
	WM	WATER SUPPLY		ESB HV 110KV UG	ESB NETWORK (HIGH VOLTAGE)
	GNI HP	GAS NETWORK (HIGH PRESSURE)		ESB HV 220KV UG	
	GNI MP	GAS NETWORK (MEDIUM PRESSURE)		ESB HV 38KV UG	
	GNI LP	GAS NETWORK (LOW PRESSURE)		ESB LV UG	ESB NETWORKS (LOW VOLTAGE)
				FW	SURFACE WATER
					FOUL SEWER NETWORK

NOTES:

1. UTILITY LOCATIONS ARE INDICATIVE ONLY AND BASED ON UTILITY PROVIDER RECORDS



Disclaimer

a. © National Transport Authority (NTA) 2022. This drawing is confidential and the copyright in it is owned by NTA. This drawing must not be either loaned, copied or otherwise reproduced in whole or in part or used for any purpose without the prior permission of NTA.

b. This drawing is to be used for the design element identified in the titleblock. Other information shown is to be considered indicative only. The drawing is to be read in conjunction with all other relevant design drawings.

c. O.S. data used for plans are printed under © Ordnance Survey Ireland Government of Ireland. All rights reserved. Licence Number 2022/OSI_NMA_180 National Transport Authority. All elevations are in metres and relate to OSI Geoid Model (OSGM15) Mean Head. All Co-ordinates are in Irish Transverse Mercator Grid (ITM) as defined by OSI active local GPS station.

d. Information concerning the position of apparatus shown on this drawing is based on drawings supplied by the utility owners and/or the utility works contractor, whilst every care has been taken in the preparation of this drawing, positions should be taken as approximate and are intended for general guidance only and no representation is made by the NTA as to the accuracy, completeness, sufficiency or otherwise of this drawing and the position of the apparatus. The information contained herein does not purport to be comprehensive or final as the apparatus is subject to being altered and/or superceded. Recipients should not rely on this information. Any liabilities are hereby expressly disclaimed.

e. The information contained herein has been provided by the NTA but does not purport to be comprehensive or final. Recipients should not rely on the information. Neither the NTA nor any of its directors, officers, employees, agents, stakeholders or advisers make any representation or warranty as to, or accept any liability or responsibility in relation to, the adequacy, accuracy, reasonableness or completeness of the information provided as part of this document or any matter on which the information is based (including but not limited to loss or damage arising as a result of reliance by recipients on the information or any part of it). Any liabilities are hereby expressly disclaimed.



Rev	Date	Drn	Chk'd	App'd	Description
M01	FEB 2023	GZ	EE	SMG	ISSUED FOR PHASE 4: PLANNING

Client

Udarás Náisiúnta Iompair
National Transport Authority

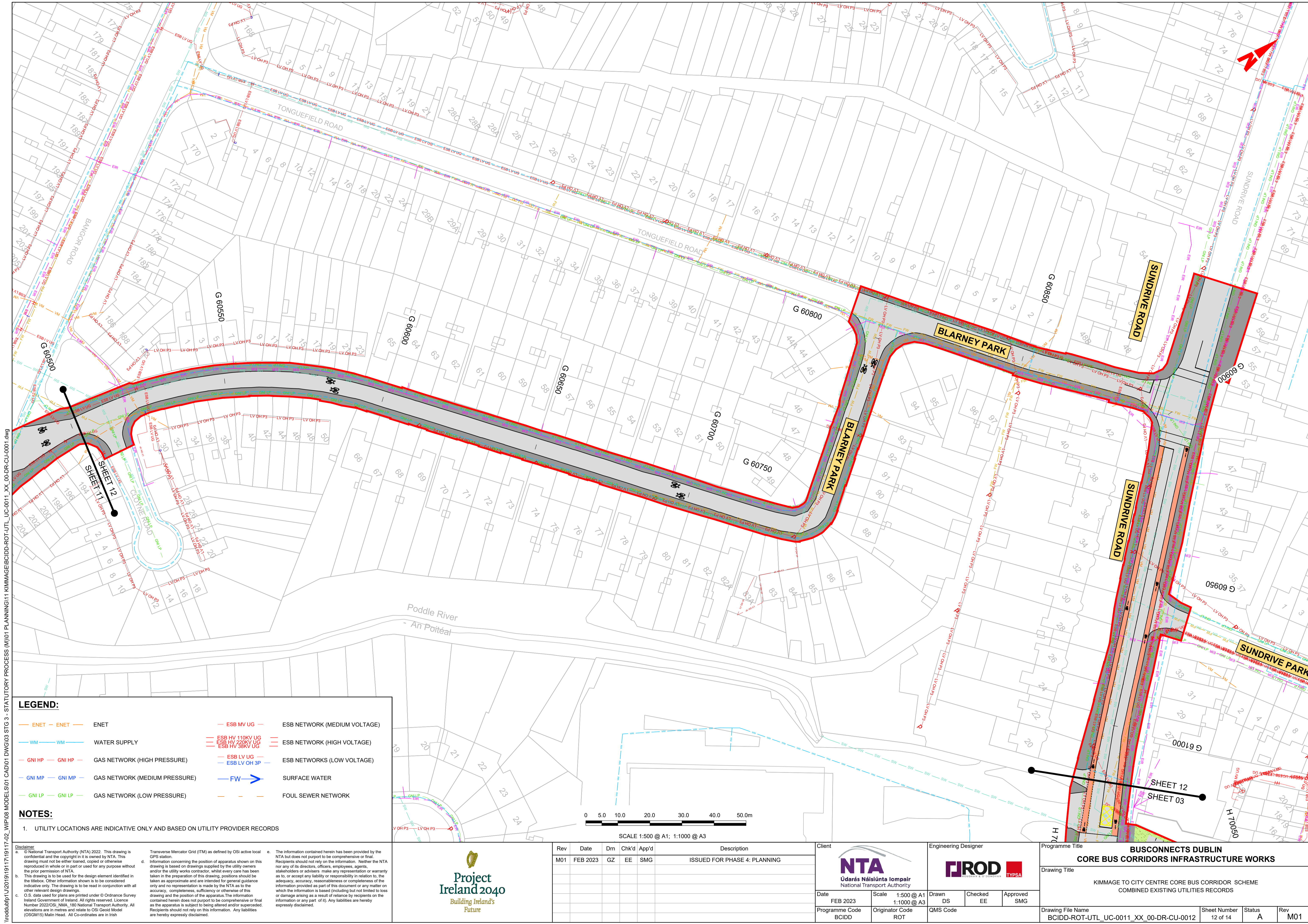
Engineering Designer

Date	Scale	Drawn	Checked	Approved
FEB 2023	1:500 @ A1 1:1000 @ A3	DS	EE	SMG

Programme Title BUSCONNECTS DUBLIN CORE BUS CORRIDORS INFRASTRUCTURE WORKS			
Drawing Title KIMMAGE TO CITY CENTRE CORE BUS CORRIDOR SCHEME COMBINED EXISTING UTILITIES RECORDS			
Drawing File Name BCIDD-ROT-UTL_UC-0011_XX_00-DR-CU-0011	Sheet Number 11 of 14	Status A	Rev M01

DO NOT SCALE USE FIGURED DIMENSIONS ONLY

\\wddub01\p1\2019\1719117-02_WIP\08 MODELS\01 CAD\01 PLANNING\11 KIMMAGE\BCIDD-ROT-UTL_UC-0011_XX_00-DR-CU-0001.dwg



LEGEND:

	ENET	ENET		ESB MV UG	ESB NETWORK (MEDIUM VOLTAGE)
	WM	WATER SUPPLY		ESB HV 110KV UG	ESB NETWORK (HIGH VOLTAGE)
	GNI HP	GAS NETWORK (HIGH PRESSURE)		ESB HV 220KV UG	
	GNI MP	GAS NETWORK (MEDIUM PRESSURE)		ESB HV 38KV UG	ESB NETWORKS (LOW VOLTAGE)
	GNI LP	GAS NETWORK (LOW PRESSURE)		ESB LV UG	
				ESB LV OH 3P	
				FW	SURFACE WATER
					FOUL SEWER NETWORK

NOTES:

- UTILITY LOCATIONS ARE INDICATIVE ONLY AND BASED ON UTILITY PROVIDER RECORDS



SCALE 1:500 @ A1; 1:1000 @ A3

Disclaimer

a. © National Transport Authority (NTA) 2022. This drawing is confidential and the copyright in it is owned by NTA. This drawing must not be either loaned, copied or otherwise reproduced in whole or in part or used for any purpose without the prior permission of NTA.

b. This drawing is to be used for the design element identified in the titleblock. Other information shown is to be considered indicative only. The drawing is to be read in conjunction with all other relevant design drawings.

c. O.S. data used for plans are printed under © Ordnance Survey Ireland Government of Ireland. All rights reserved. Licence Number 2022/OSI_NMA_180 National Transport Authority. All elevations are in metres and relate to OSI Geoid Model (OSGM15) Mean Head. All Co-ordinates are in Irish Transverse Mercator Grid (ITM) as defined by OSI active local GPS station.

d. Information concerning the position of apparatus shown on this drawing is based on drawings supplied by the utility owners and/or the utility works contractor, whilst every care has been taken in the preparation of this drawing, positions should be taken as approximate and are intended for general guidance only and no representation is made by the NTA as to the accuracy, completeness, sufficiency or otherwise of this drawing and the position of the apparatus. The information contained herein does not purport to be comprehensive or final as the apparatus is subject to being altered and/or superseded. Recipients should not rely on this information. Any liabilities are hereby expressly disclaimed.

e. The information contained herein has been provided by the NTA but does not purport to be comprehensive or final. Recipients should not rely on the information. Neither the NTA nor any of its directors, officers, employees, agents, stakeholders or advisers make any representation or warranty as to, or accept any liability or responsibility in relation to, the adequacy, accuracy, reasonableness or completeness of the information provided as part of this document or any matter on which the information is based (including but not limited to loss or damage arising as a result of reliance by recipients on the information or any part of it). Any liabilities are hereby expressly disclaimed.



Rev	Date	Drm	Chk'd	App'd	Description
M01	FEB 2023	GZ	EE	SMG	ISSUED FOR PHASE 4: PLANNING

Client NTA Udarás Náisiúnta Iompair National Transport Authority		Engineering Designer PROD TYPSA		
Date FEB 2023	Scale 1:500 @ A1 1:1000 @ A3	Drawn DS	Checked EE	Approved SMG
Programme Code BCIDD	Originator Code ROT	QMS Code		

Programme Title BUSCONNECTS DUBLIN CORE BUS CORRIDORS INFRASTRUCTURE WORKS				
Drawing Title KIMMAGE TO CITY CENTRE CORE BUS CORRIDOR SCHEME COMBINED EXISTING UTILITIES RECORDS				
Drawing File Name BCIDD-ROT-UTL_UC-0011_XX_00-DR-CU-0012	Sheet Number 12 of 14	Status A	Rev M01	

DO NOT SCALE USE FIGURED DIMENSIONS ONLY

\\produbp1\j2019\1917119117-02-WIP\08 MODELS\01 CAD\01 PLANNING\11 KIMMAGE\BCIDD-ROT-UTL_UC-0011_XX_00-DR-CU-0001.dwg



LEGEND:

ENET	ENET	ESB MV UG	ESB NETWORK (MEDIUM VOLTAGE)
WM	WATER SUPPLY	ESB HV 110KV UG	ESB NETWORK (HIGH VOLTAGE)
GNI HP	GAS NETWORK (HIGH PRESSURE)	ESB LV UG	
GNI MP	GAS NETWORK (MEDIUM PRESSURE)	ESB LV OH 3P	
GNI LP	GAS NETWORK (LOW PRESSURE)	FW	SURFACE WATER
			FOUL SEWER NETWORK

NOTES:

- UTILITY LOCATIONS ARE INDICATIVE ONLY AND BASED ON UTILITY PROVIDER RECORDS

\\nodub\p\j\2019\1917117-02_WIP\08 MODELS\01 CAD\01 DWG\03 STG 3 - STATUTORY PROCESS (M)\01 PLANNING\11 KIMMAGE\BCIDD-ROT-UTL_UC-0011_XX_00-DR-CU-0001.dwg

Disclaimer

a. © National Transport Authority (NTA) 2022. This drawing is confidential and the copyright in it is owned by NTA. This drawing must not be either loaned, copied or otherwise reproduced in whole or in part or used for any purpose without the prior permission of NTA.

b. This drawing is to be used for the design element identified in the titleblock. Other information shown is to be considered indicative only. The drawing is to be read in conjunction with all other relevant design drawings.

c. O.S. data used for plans are printed under © Ordnance Survey Ireland Government of Ireland. All rights reserved. Licence Number 2022/O.S._NMA_180 National Transport Authority. All elevations are in metres and relate to OSI Geoid Model (OSGM15) Mean Head. All Co-ordinates are in Irish Transverse Mercator Grid (ITM) as defined by OSI active local GPS station.

d. Information concerning the position of apparatus shown on this drawing is based on drawings supplied by the utility owners and/or the utility works contractor, whilst every care has been taken in the preparation of this drawing, positions should be taken as approximate and are intended for general guidance only and no representation is made by the NTA as to the accuracy, completeness, sufficiency or otherwise of this drawing and the position of the apparatus. The information contained herein does not purport to be comprehensive or final as the apparatus is subject to being altered and/or superseded. Recipients should not rely on this information. Any liabilities are hereby expressly disclaimed.

e. The information contained herein has been provided by the NTA but does not purport to be comprehensive or final. Recipients should not rely on the information. Neither the NTA nor any of its directors, officers, employees, agents, stakeholders or advisers make any representation or warranty as to, or accept any liability or responsibility in relation to, the adequacy, accuracy, reasonableness or completeness of the information provided as part of this document or any matter on which the information is based (including but not limited to loss or damage arising as a result of reliance by recipients on the information or any part of it). Any liabilities are hereby expressly disclaimed.

Rev	Date	Drn	Chk'd	App'd	Description
M01	FEB 2023	GZ	EE	SMG	ISSUED FOR PHASE 4: PLANNING

Client

Udarás Náisiúnta Iompair
National Transport Authority

Engineering Designer

Date	Scale	Drawn	Checked	Approved
FEB 2023	1:500 @ A1 1:1000 @ A3	DS	EE	SMG

Programme Title

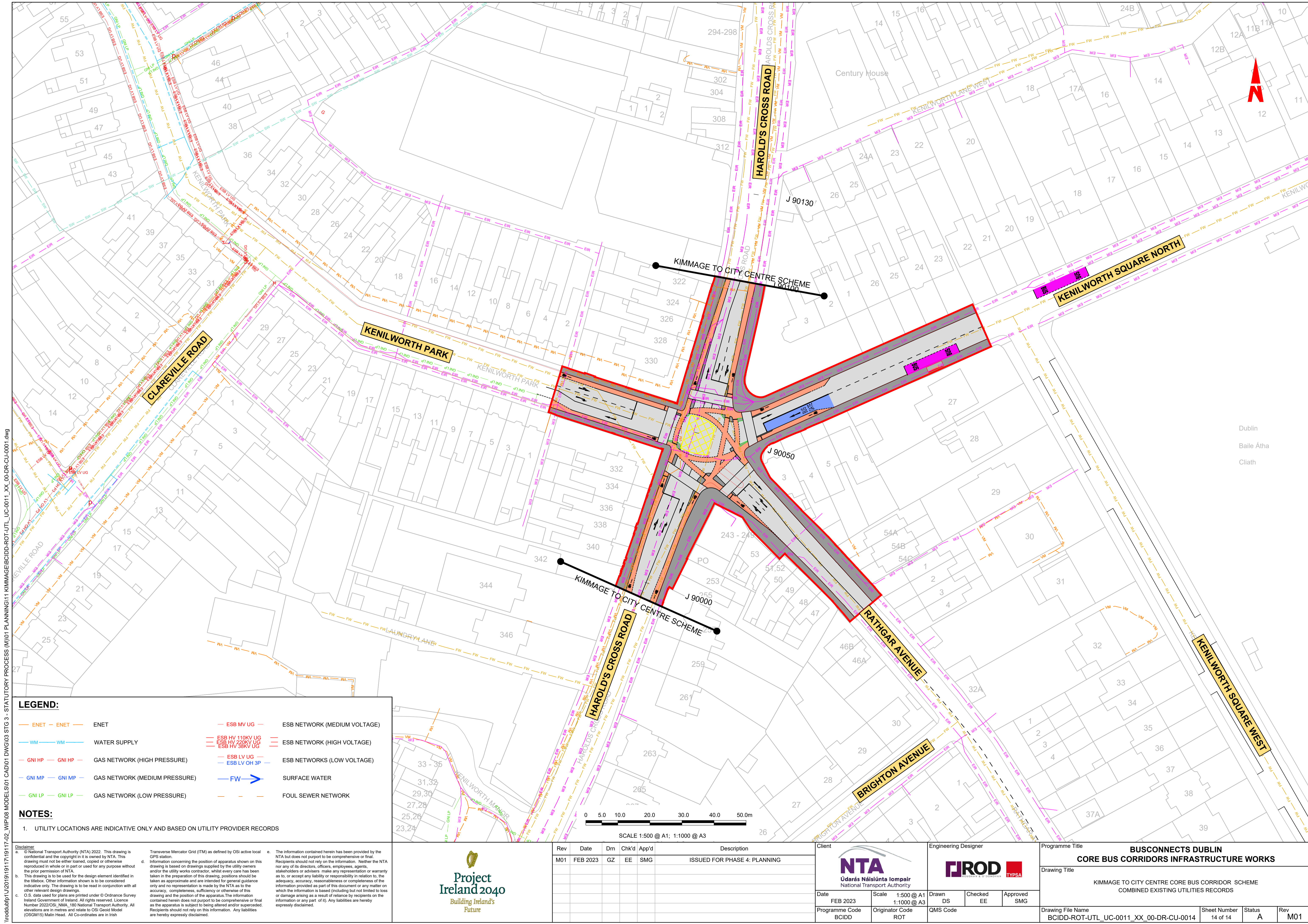
**BUSCONNECTS DUBLIN
CORE BUS CORRIDORS INFRASTRUCTURE WORKS**

Drawing Title

KIMMAGE TO CITY CENTRE CORE BUS CORRIDOR SCHEME
COMBINED EXISTING UTILITIES RECORDS

Drawing File Name	Sheet Number	Status	Rev
BCIDD-ROT-UTL_UC-0011_XX_00-DR-CU-0013	13 of 14	A	M01

DO NOT SCALE USE FIGURED DIMENSIONS ONLY



W:\000000\1917117-02_WIP08 MODELS\01 CAD\01 PLANNING\11 KIMMAGE\BCIDD-ROT-UTL_UC-0011_XX_00-DR-CU-0001.dwg
 Dublin
 Baile Átha
 Cliath

LEGEND:

	ENET	ENET		ESB MV UG	ESB NETWORK (MEDIUM VOLTAGE)
	WM	WATER SUPPLY		ESB HV 110KV UG	ESB NETWORK (HIGH VOLTAGE)
	GNI HP	GAS NETWORK (HIGH PRESSURE)		ESB HV 38KV UG	ESB NETWORK (HIGH VOLTAGE)
	GNI MP	GAS NETWORK (MEDIUM PRESSURE)		ESB LV UG	ESB NETWORKS (LOW VOLTAGE)
	GNI LP	GAS NETWORK (LOW PRESSURE)		ESB LV OH 3P	ESB NETWORKS (LOW VOLTAGE)
	FW	SURFACE WATER			FOUL SEWER NETWORK

NOTES:

1. UTILITY LOCATIONS ARE INDICATIVE ONLY AND BASED ON UTILITY PROVIDER RECORDS

Disclaimer:

a. © National Transport Authority (NTA) 2022. This drawing is confidential and the copyright in it is owned by NTA. This drawing must not be either loaned, copied or otherwise reproduced in whole or in part or used for any purpose without the prior permission of NTA.

b. This drawing is to be used for the design element identified in the titleblock. Other information shown is to be considered indicative only. The drawing is to be read in conjunction with all other relevant design drawings.

c. O.S. data used for plans are printed under © Ordnance Survey Ireland Government of Ireland. All rights reserved. Licence Number 2022/OSI_NMA_180 National Transport Authority. All elevations are in metres and relate to OSI Geoid Model (OSGM15) Mean Head. All Co-ordinates are in Irish Transverse Mercator Grid (ITM) as defined by OSI active local GPS station.

d. Information concerning the position of apparatus shown on this drawing is based on drawings supplied by the utility owners and/or the utility works contractor, whilst every care has been taken in the preparation of this drawing, positions should be taken as approximate and are intended for general guidance only and no representation is made by the NTA as to the accuracy, completeness, sufficiency or otherwise of this drawing and the position of the apparatus. The information contained herein does not purport to be comprehensive or final as the apparatus is subject to being altered and/or superseded. Recipients should not rely on this information. Any liabilities are hereby expressly disclaimed.

e. The information contained herein has been provided by the NTA but does not purport to be comprehensive or final. Recipients should not rely on the information. Neither the NTA nor any of its directors, officers, employees, agents, stakeholders or advisers make any representation or warranty as to, or accept any liability or responsibility in relation to, the adequacy, accuracy, reasonableness or completeness of the information provided as part of this document or any matter on which the information is based (including but not limited to loss or damage arising as a result of reliance by recipients on the information or any part of it). Any liabilities are hereby expressly disclaimed.



Rev	Date	Drm	Chk'd	App'd	Description
M01	FEB 2023	GZ	EE	SMG	ISSUED FOR PHASE 4: PLANNING

Client
NTA
 Údarás Náisiúnta Iompair
 National Transport Authority

Engineering Designer
CIROD
 TYPSA

Programme Title BUSCONNECTS DUBLIN CORE BUS CORRIDORS INFRASTRUCTURE WORKS	
Drawing Title KIMMAGE TO CITY CENTRE CORE BUS CORRIDOR SCHEME COMBINED EXISTING UTILITIES RECORDS	
Drawing File Name BCIDD-ROT-UTL_UC-0011_XX_00-DR-CU-0014	Sheet Number 14 of 14
Status A	Rev M01

DO NOT SCALE USE FIGURED DIMENSIONS ONLY